



LINEFILTER HGN 341



FEATURES

The HGN-341 power entry module features an IEC Connector, 2-pole on/off switch, a fuse holder that accepts both European 5 x 20mm or N. American 1/4" x 1 1/4" (3AG) fuse, and a voltage selector with four different voltages (110V, 120V, 220V, 240V). The voltage selector is designed to provide a simple means to change transformer primary connections. These filters are also available for Medical equipment with low leakage current to comply with UL 544 & UL2601.

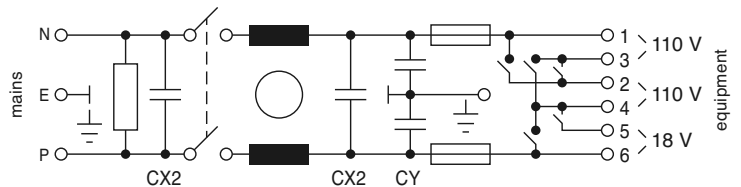
APPLICATIONS

Computer & networking equipment, Measuring & control equipment, Data processing equipment, laboratory instruments, Switching power supplies, other electronic equipment.

TECHNICAL DATA

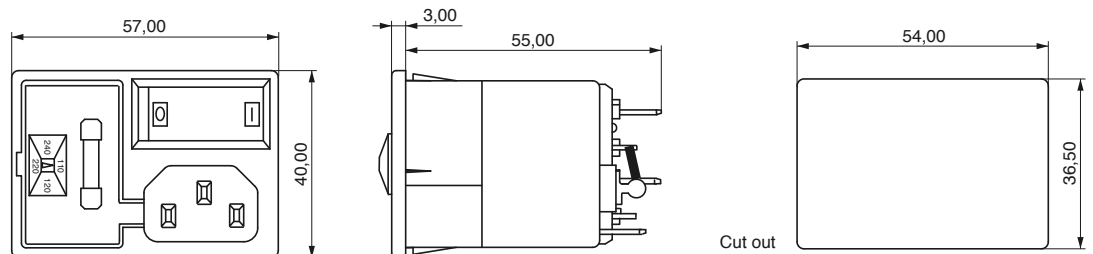
Operating voltage	250 V / 50 Hz 120 V / 60 Hz
Rated current, 40°C	1A / 2A / 3A / 4A / 6A
Leakage current	< 0,5 mA / 250 VAC
Temperature range	-25°C – +85°C
Test voltage (VDE 0565)	1,8 kV / 50 Hz – 2 s

CIRCUIT



Type / Ordering-No.	Nominal current at 40°C	CX2 [µF]	CY[pF]	L[mH]	Remarks
HGN 341-1-FX	1A	2 x 0,033	2 x 2200	2 x 10,3	F: Fast-on 6,3 x 0,8 mm X: Panel thickness X=150: 1,5 mm X=160: 1,6 mm X=200: 2,0 mm
-2-FX	2A	2 x 0,033	2 x 2200	2 x 4,6	
-3-FX	3A	2 x 0,033	2 x 2200	2 x 2,5	
-4-FX	4A	2 x 0,033	2 x 2200	2 x 1,2	
-6-FX	6A	2 x 0,033	2 x 2200	2 x 0,8	
Medical version					
HGN 341-1M-FX	1A	2 x 0,033	–	2 x 10,3	
-2M-FX	2A	2 x 0,033	–	2 x 4,6	
-3M-FX	3A	2 x 0,033	–	2 x 2,5	
-4M-FX	4A	2 x 0,033	–	2 x 1,2	
-6M-FX	6A	2 x 0,033	–	2 x 0,8	

DIMENSIONS



Attenuation in 50 Ohm-
50 Ohm circuit according CISPR

