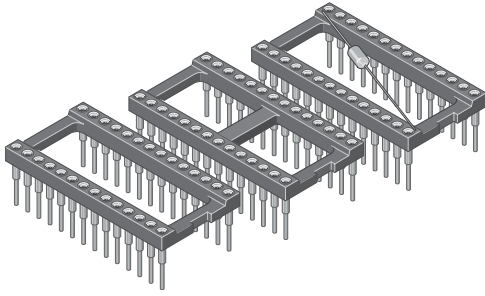


Precision IC-Socket 2,54 mm

Series

001

Product group
1

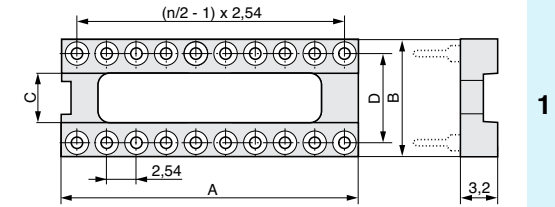


Rated current	3,0 A
Rated voltage	150 VRMS / VDC
Withstand voltage	1000 VRMS for one minute
Material contact	Copper alloy
Material clip	BeCu
Material insulator	High temp. thermoplast UL94V-0
Operating temperature	-55°C to +125°C
Max. soldering temper.	260°C for 10 seconds

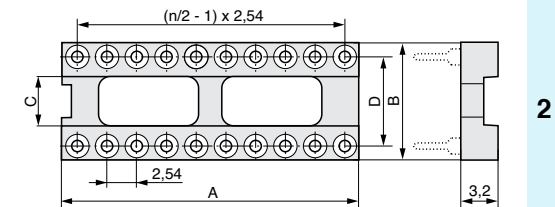
pitch	2,54
termination	
mating pin size	ø 0,40-0,56
	□ 0,25x0,45
max. pincount	064

All dimensions in mm.

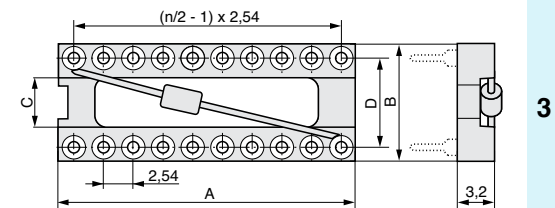
Variation



1

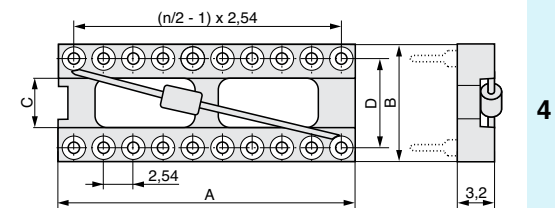


2



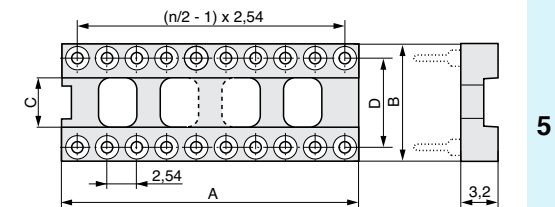
3

Capacity 100 nF



4

Capacity 100 nF



5

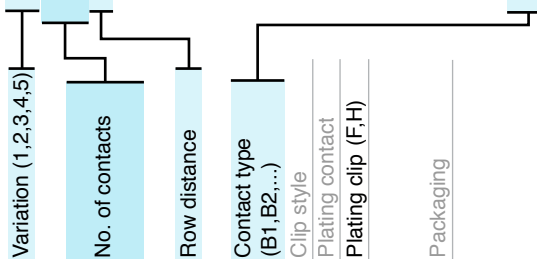
* 064 contacts with 3 center bars

Clip style:	Plating:	Packaging:
S = 4 finger clip	T = Sn	T = Tube
	F = Au	
	H = Au 0,75 μ	

Contact type (for details please see page 22-23)

B1	
B2	
B3	
F1	
F2	
F3	
F4	
F5	
F6	
F7	
F9	
G1	
G2	
G3	
G4	
G5	
T1	
T2	
T3	

no. of contacts	row distance (code)	row distance (mm)	see figure left	see figure left	see figure left	available in variation					
							n	D	A	B	C
004	3	7,62	5,00	10,10	4,40	1					
006	3	7,62	7,60	10,10	4,40	1					
008	3	7,62	10,10	10,10	4,40	1	3				
010	2	5,08	12,60	7,60	-	1					
010	3	7,62	12,60	10,10	4,40	1					
010	6	15,24	12,70	17,70	10,50	1					
012	3	7,62	15,20	10,10	4,40	1					
014	3	7,62	17,70	10,10	4,40	1	3				
016	3	7,62	20,30	10,10	4,40	1	3				
018	3	7,62	22,80	10,10	4,40	1	2 3 4				
020	3	7,62	25,30	10,10	4,40	1	2 3 4				
020	4	10,16	25,40	12,60	6,50	2					
022	3	7,62	27,80	10,10	4,40	1	2				
022	4	10,16	27,80	12,60	6,50	2					
024	3	7,62	30,40	10,10	4,40	1	2 3 4				
024	4	10,16	30,40	12,60	6,50	2					
024	6	15,24	30,40	17,70	10,60	1	2 3 4				
028	3	7,62	35,50	10,10	4,40	2					
028	4	10,16	35,50	12,60	6,50	2					
028	6	15,24	35,50	17,70	10,60	1	2 3 4				
032	4	10,16	40,60	12,60	6,50	2					
032	6	15,24	40,60	17,70	10,60	1	2 3 4				
036	6	15,24	45,70	17,70	10,60					5	
040	6	15,24	50,80	17,70	10,60	1	2 3 4 5				
048	6	15,24	60,90	17,70	10,60	1				5	
050	9	22,86	63,50	25,30	17,70					5	
064	9	22,86	81,20	25,30	17,70					5	



Order code:

001 - 2 - 2 - 2 - 2 - 2 - 2 - ST - XT - 0

Mating series
see page

033
2-2



www.mpe-connector.de

MPE-Garry GmbH • Schafflerstraße 13 • 87629 Füssen • Germany • Phone: +49 (0) 83 62 / 91 56-0 • Fax: +49 (0) 83 62 / 91 56-500 • Email: vk@mpe-connector.de • www.mpe-connector.de